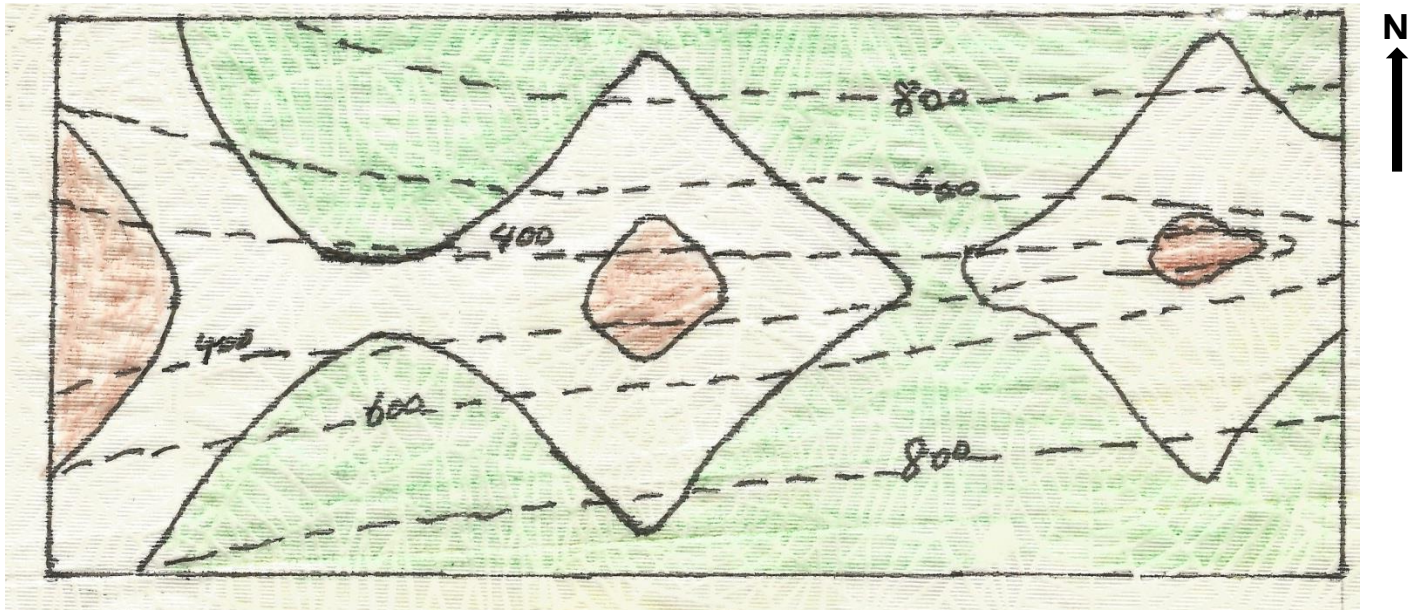


Folded Strata : Symmetrical Fold

Scale 1 : 20 000

Requirements:

1. Draw and label strike lines of strata, find the attitude of a limb.
2. Plot hinge line of the Folds.
3. Describe the folds of the area on the basis (Youngest direction, symmetry and attitude of the hinge line.
4. Construct a geological cross section perpendicular to strike line and passing through point A.
5. Find the wavelength and amplitude of a Fold.