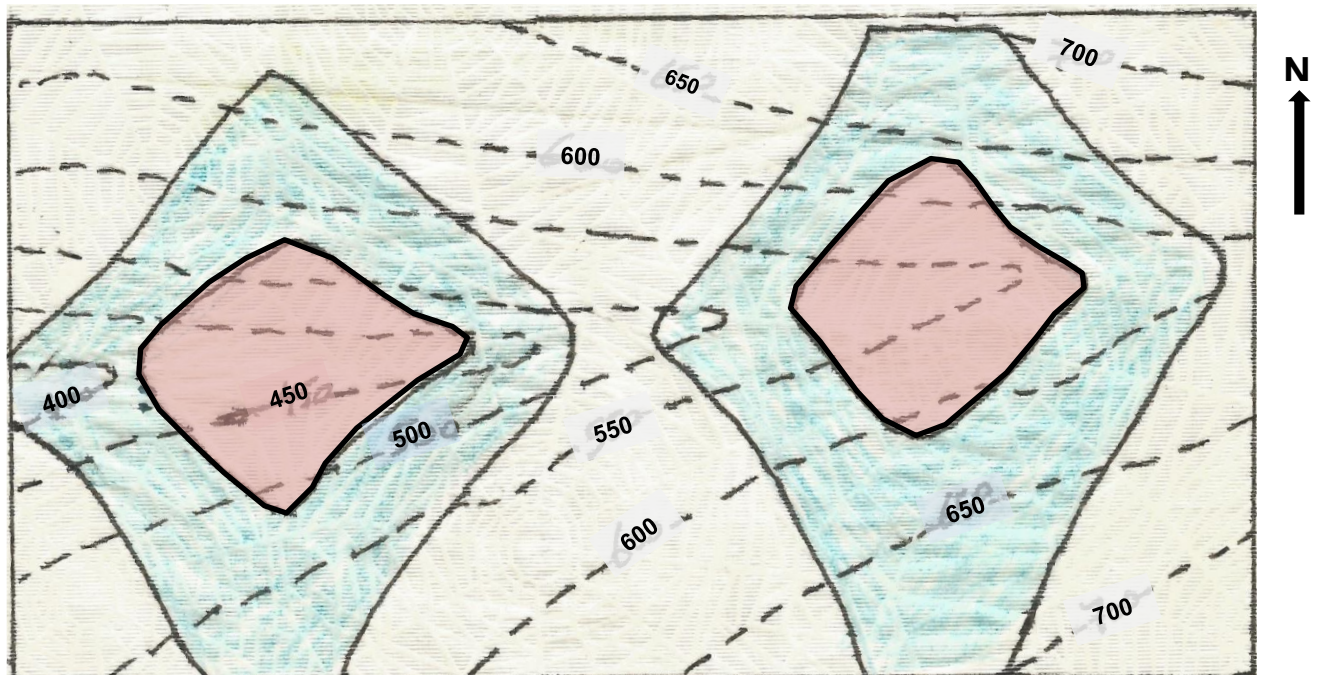


Folded Strata: Asymmetrical Fold

Scale 1 : 5000

Requirements:

1. Draw and label strike lines of strata, find the attitude of a limb.
2. Plot hinge line of the Fold, then find attitude of the hinge lines.
3. Describe the folds of the area on the basis (Youngest direction, symmetry and attitude of the hinge line).
4. Construct a geological cross section perpendicular to strike line and passing through point A.
5. Determine a vergency of the Folds.